



REGIONE MOLISE



COMUNE DI ISERNIA

**DEMOLIZIONE E RICOSTRUZIONE PISCINA COMUNALE
IN LOCALITA' LE PIANE**

PROGETTO DEFINITIVO

ELABORATO

**RELAZIONI SPECIALISTICHE: QUADRO DI RAFFRONTO DELLE SEZIONI
DELL'INTERA AREA, DOCUMENTAZIONE FOTOGRAFICA RECINZIONE DA
SPOSTARE, DOCUMENTAZIONE FOTOGRAFICA OPERE DI RECINZIONE**

DATA
08.2019




ALLEGATO:

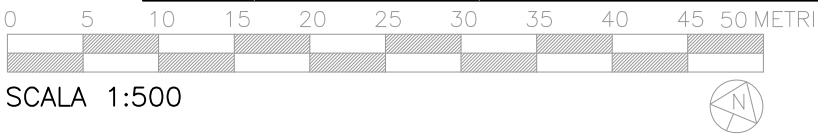
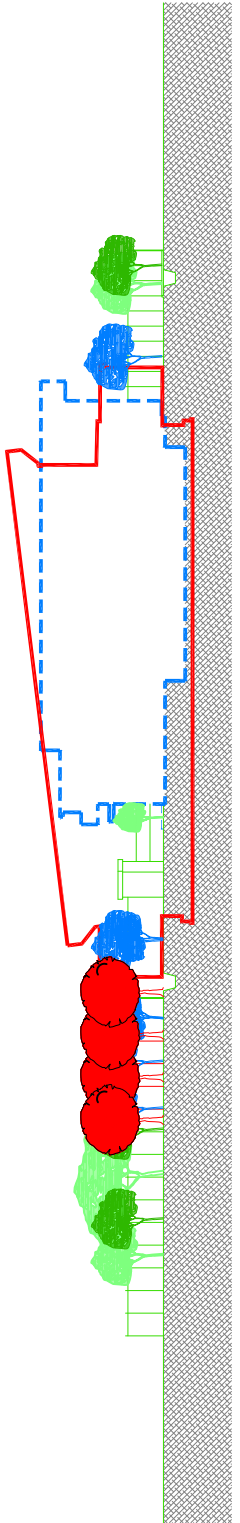
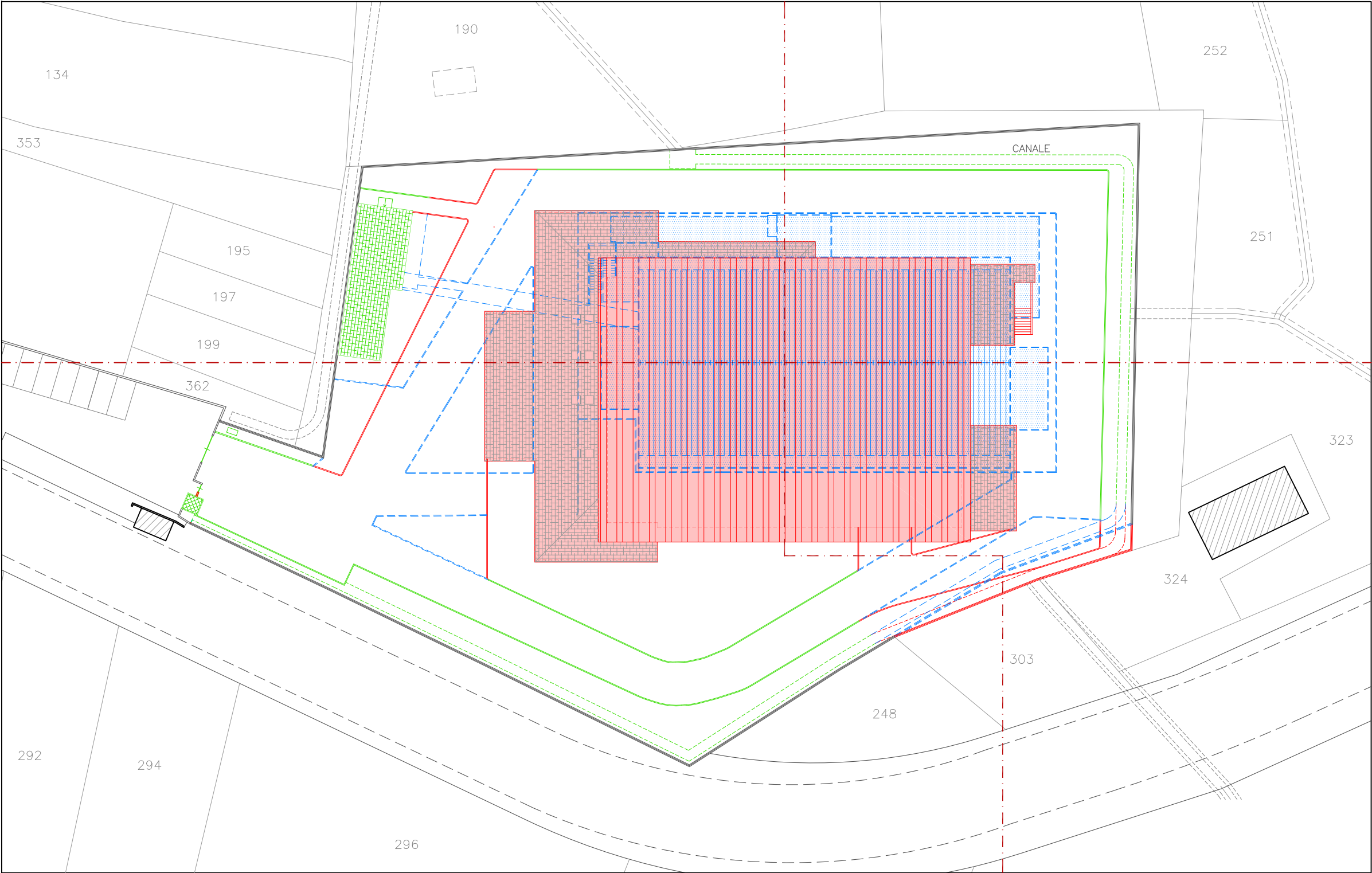
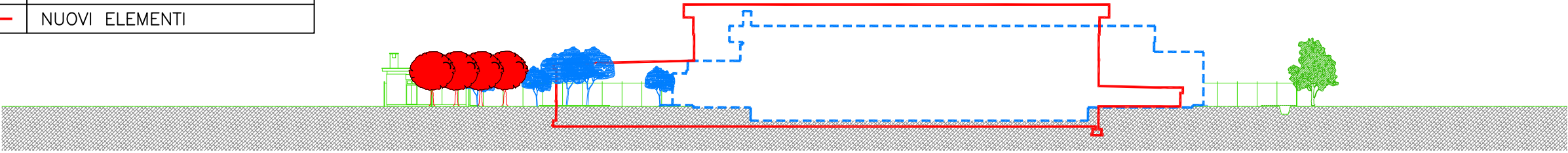
3.7

I PROGETTISTI:
dott. ing. Giuseppe Cutone
geom. Giulio de Simone

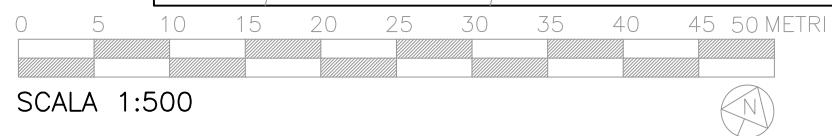
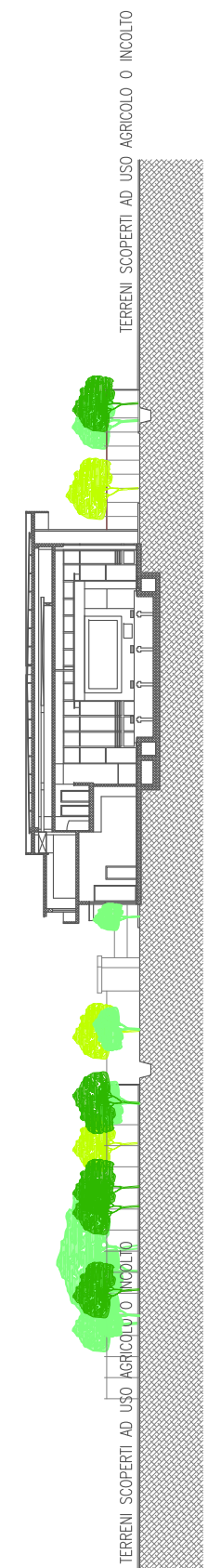
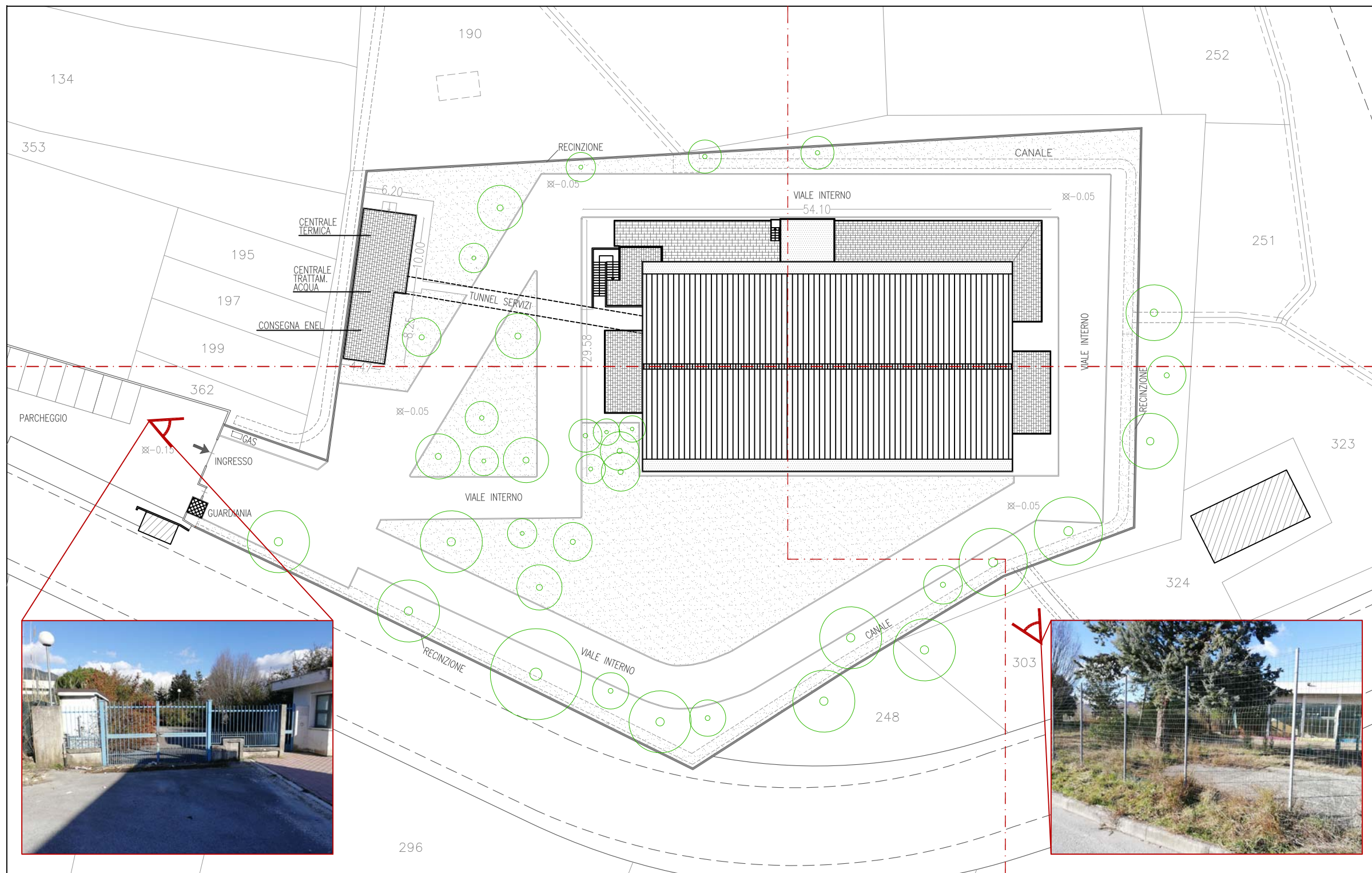
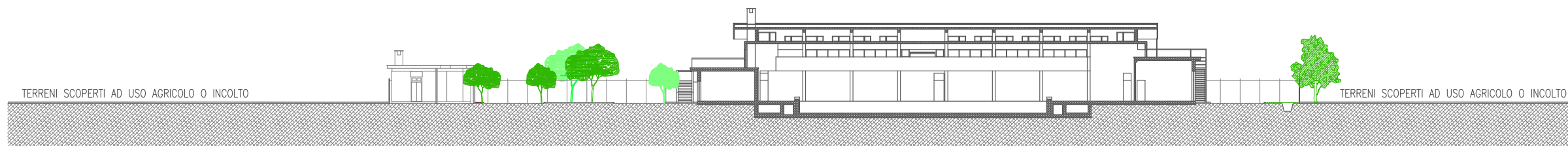
IL R.U.P.
dott. ing. Antonio Ricchiuti

**L'ASSESSORE ALLO SPORT ED
ALL'EDILIZIA SPORTIVA:**
dott.ssa Antonella Matticoli

	ELEMENTI CONFERMATI
	ELEMENTI DEMOLITI
	NUOVI ELEMENTI



1 - PLANIMETRIA DI RAFFRONTO



2 – PLANIMETRIA IMPIANTO DA DEMOLIRE

