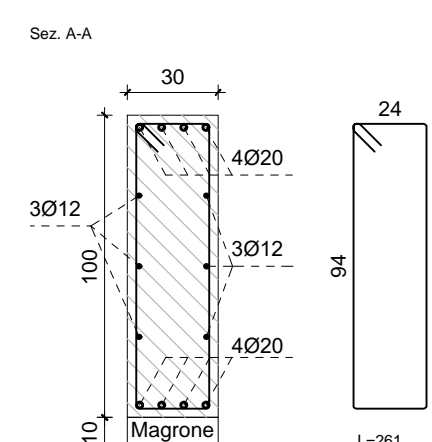
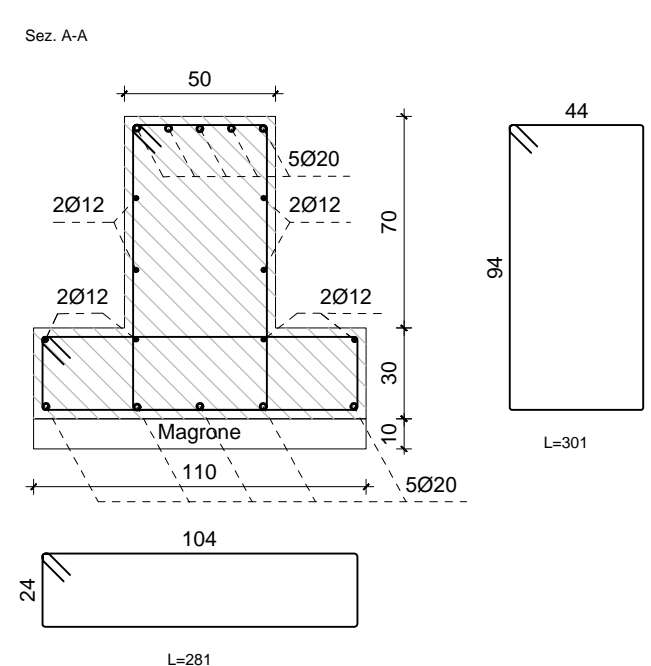
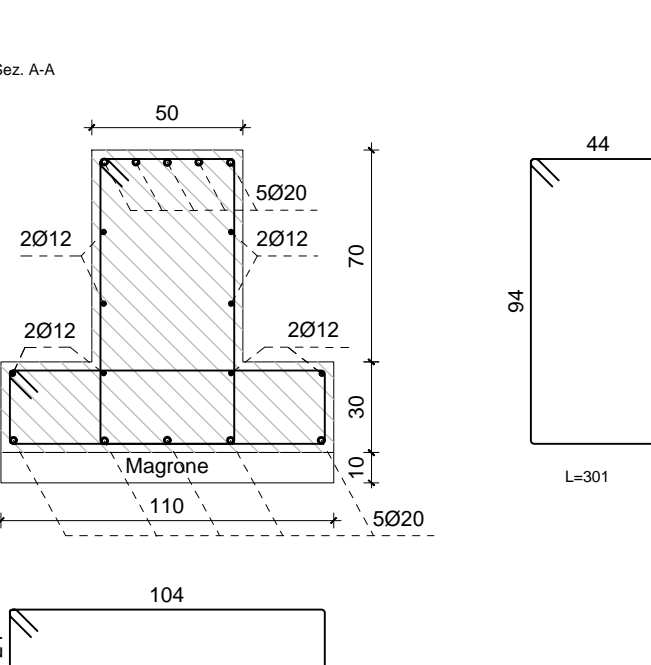
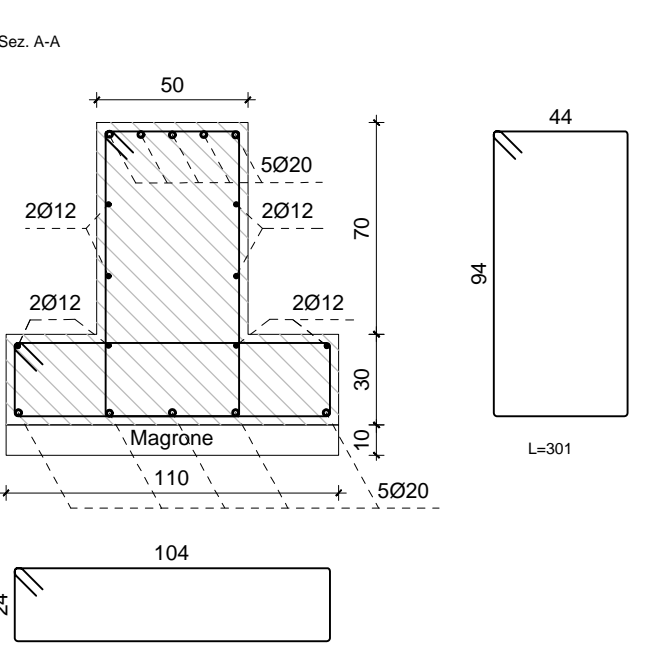
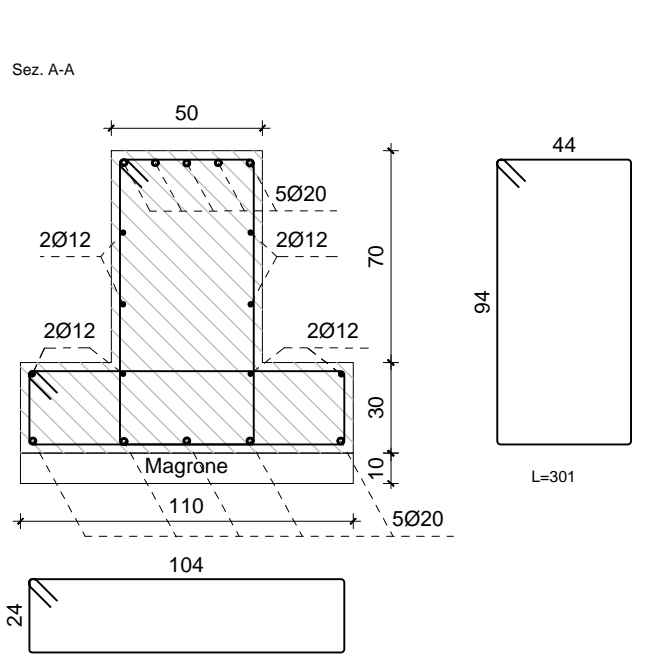
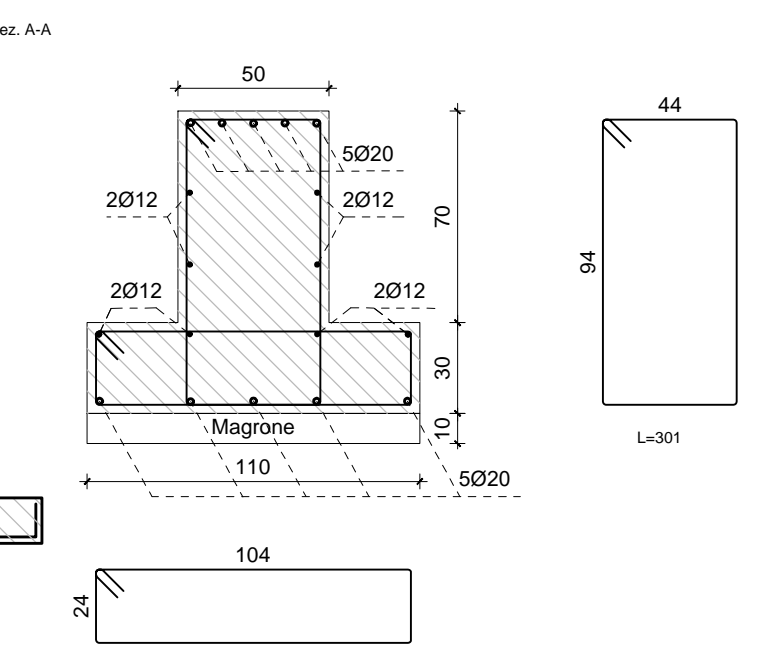
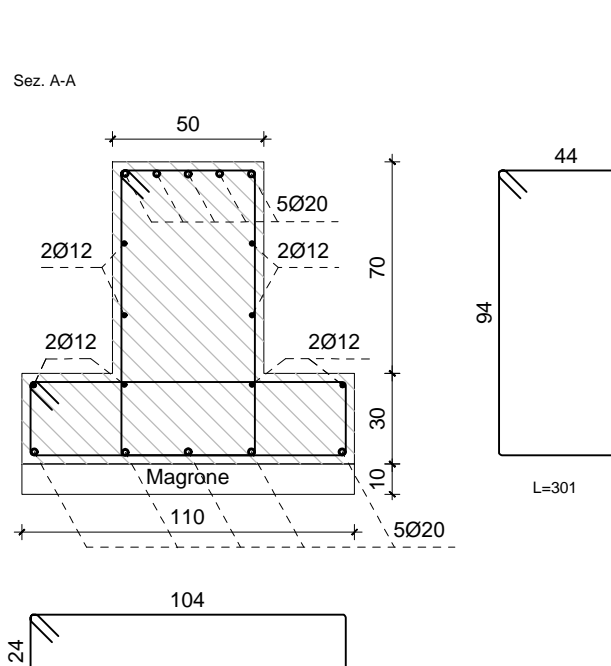
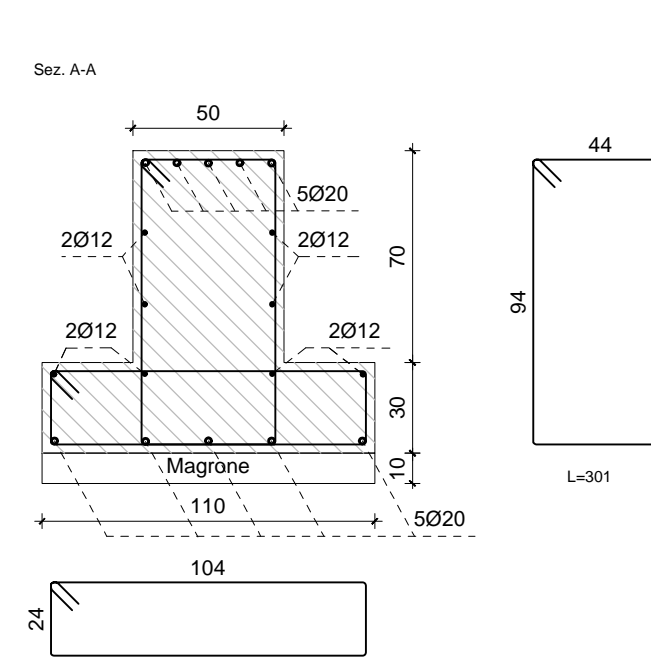
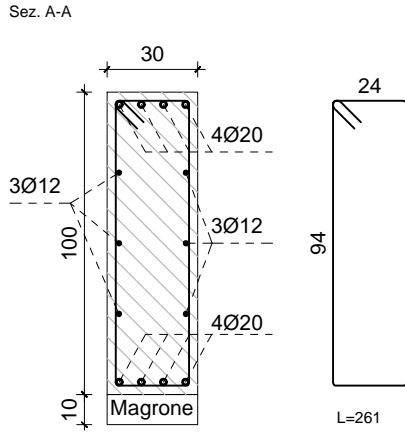
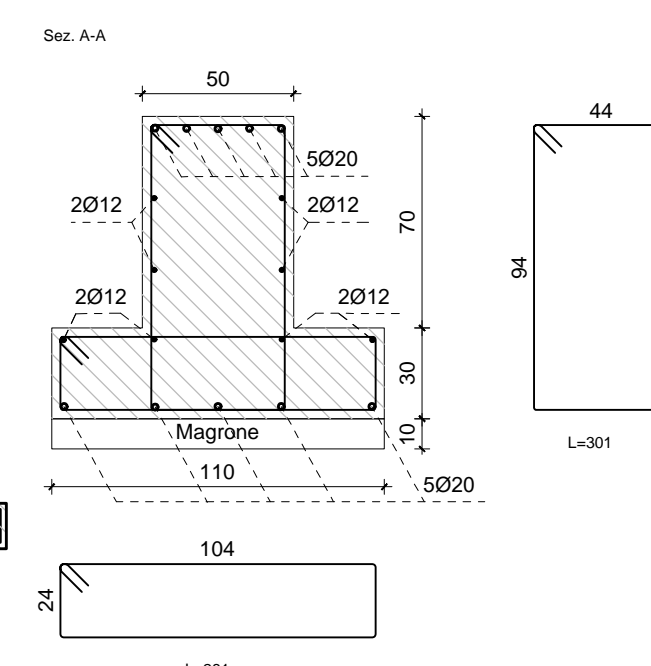
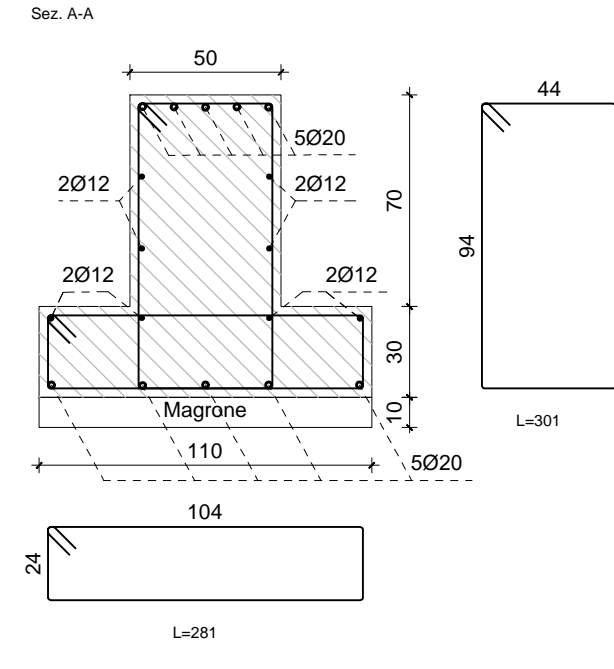
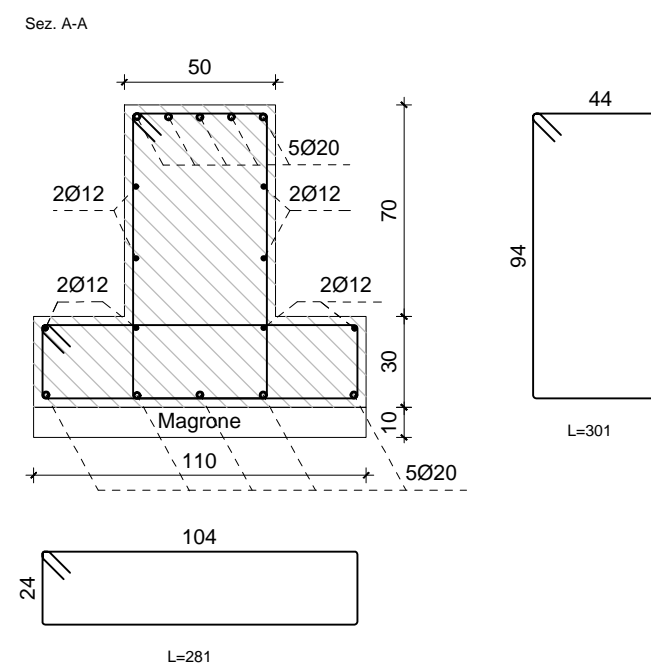
Travata 59Travata 73Travata 92
$$1.15 \leq \beta/\beta_0 \leq 1.25 : (\beta/\beta_0)_{\text{max}} \leq 1.25$$

- MODULO A TRAZIONE PARALLELO ALLE FIBRE: 30 NMM
- RESISTENZA A TRAZIONE PARALLELO ALLE FIBRE: 218 NMM
- MODULO DI ELASTICITÀ PARALLELO ALLE FIBRE: 11800 NMM
- MODULO TANGENZIALE PARALLELO ALLE FIBRE: 550 NMM
- PESO: 500 g/m²

